

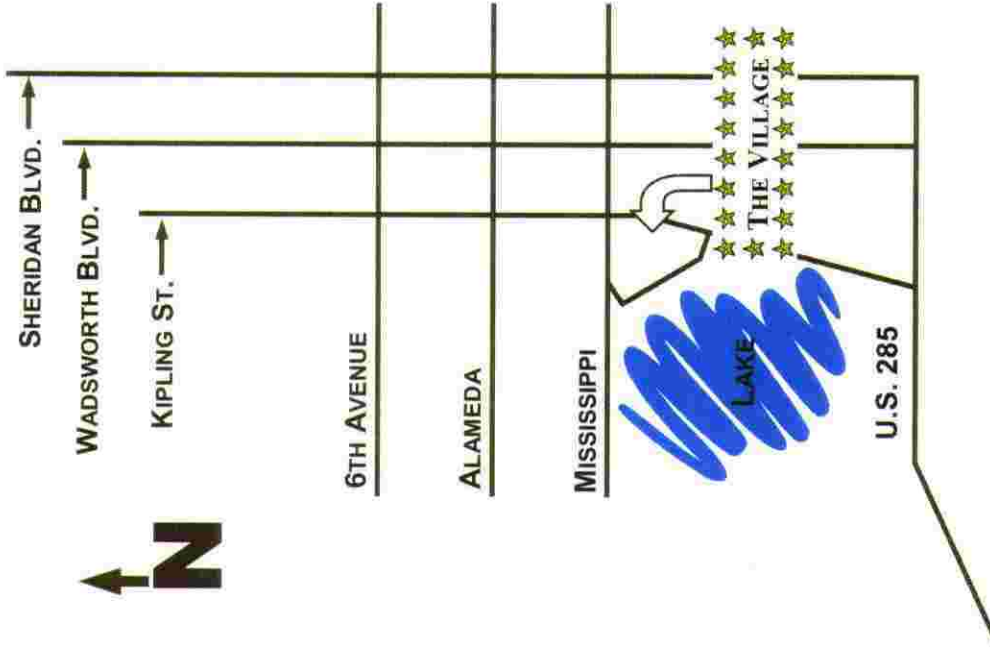
**THE VILLAGE APARTMENTS**  
10250-10270 WEST MISSISSIPPI AVENUE  
LAKEWOOD, COLORADO

The Village is conveniently located on the corner of Kipling Avenue and Mississippi Avenue. Sitting just below the Main Reservoir, The Village is located in a well-established neighborhood. It provides you with easy access to the mountains and to downtown Denver.

At The Village, enjoy incredible mountain and city views in a non-congested community. A short walk to hiking and biking trails. Professionally landscaped grounds offer a serene, park-like atmosphere.

Our amenities include:

- Swimming Pool
- Recreation Room (w/pool table)
- Laundry Facilities in each bldg.
- Sound Absorbing Construction
- Secure storage space available
  - Dishwashers
- Air Conditioning (main & upper)
  - Walk-in closet in 2 bedroom master
  - All Off Street Parking
- Next to trails & bike paths
- Sits on 6.7 acres in a park like setting of grass and trees
- Backs up to the Main Reservoir

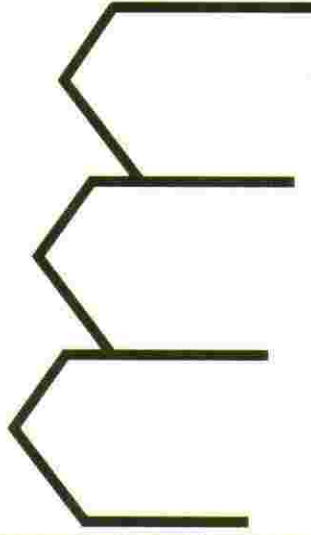


**THE**

**VILLAGE**

**APARTMENTS**

*Where Open Space  
and  
Residential Living  
Come Together*



OFFICE: 303.985.0374

THEVILLAGEAPTS@COMCAST.NET

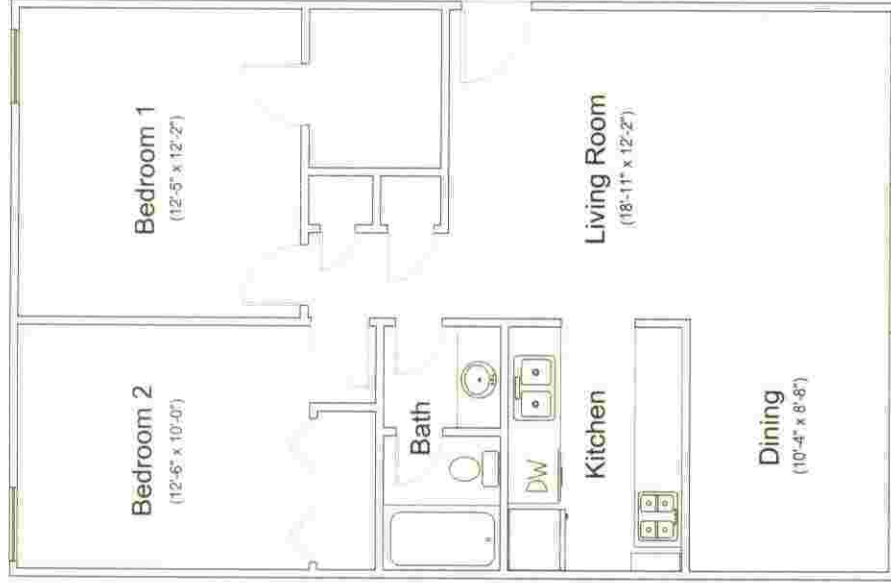


**Rather Co., LLC**

# Floor Plans

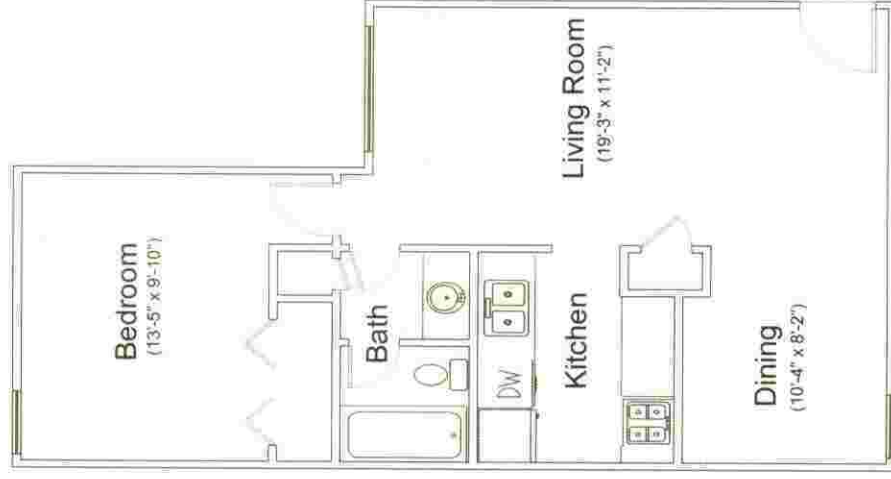
The layout of each floor plan was designed with accessibility in mind. The kitchen provides ample cabinet storage along with plenty of counter space. The bathroom has a privacy door separating the vanity sink from the shower and toilet. The windows provide adequate ventilation and light while providing maximum wall area for furniture.

For sound reduction, all party walls utilized fiberglass insulation and sound board. Between floors, 1 1/2" of lightweight concrete was used. The sound construction used here was beyond the required code and is seldom used today due to the added expense.



895 SQUARE FEET

MEASUREMENTS ARE APPROXIMATE  
AND MAY VARY BETWEEN APARTMENTS



655 SQUARE FEET

MEASUREMENTS ARE APPROXIMATE  
AND MAY VARY BETWEEN APARTMENTS